



PROFINESS

VERBINDUNGS- & MONTAGESYSTEME

■ Mounting systems for photovoltaics

Product range



 **DEKRA**
INDUSTRIAL
BAUART GEPRÜFT

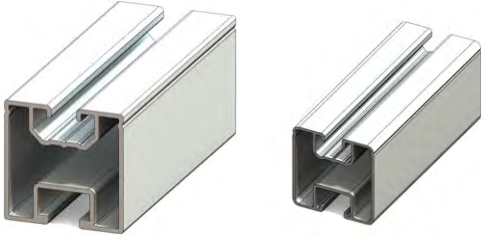
CHAPTERS

01 RAIL SYSTEM	03
01.1 Mounting rails 40mm	03
01.2 Mounting rails 80x40mm	04
01.3 Mounting rails for mounting on trapezoidal sheet metal	04
01.4 Mounting rails 50mm height	05
01.5 Sliding block	06
01.6 Accessoires from Aluminium	06
01.7 Made-to-order mounting rails	07
01.8 Simple cross bracing	07
01.9 Heavy duty profile	08
02 RAIL CONNECTORS	08
03 MODULE ASSEMBLY	10
03.1 Module clamps for framed modules	10
03.2 Screws and accessoires for module clamps	11
03.3 Module clamps for glass modules	11
04 FIXINGS FOR TILED ROOFS	12
05 SOLAR FIXINGS FOR SHEET METAL AND ETERNIT ROOFS	13
05.1 Pre-assembled dowel screws for timber supporting structures	13
05.2 Approved dowel screws for timber supporting structures	14
05.3 Approved dowel screws for steel supporting structures	14
05.4 Adaptor plates for Dowel screws	15
05.5 Accessories for sheet metal and Eternit roofs	15
05.6 Accessories for seamed and trapezoidal sheet metal roofs	16
06 ACCESSOIRES FOR FLAT AND SHEET ROOFS	17
06.1 Elevation made from aluminium angle profile	17
06.2 aerodynamic flat roof system	17
07 OPEN LAND INSTALLATIONS	18
08 RAILING / FENCE / WALL FRAMES	18
09 SCREW ACCESSORIES, SOLAR	19
10 CHECKLIST ELEVATION STANDS	24
11 CHECKLIST FOR AERODYNAMIC SYSTEMS	25
12 CHECKLIST FOR TILED AND PITCHED ROOFS	26
13 CHECKLIST FOR TRAPEZOIDAL METAL SHEET ROOFS	27
14 CHECKLIST FOR HANGER BOLT MOUNTING	28
15 CONTACT	29

01 RAIL SYSTEM

01.1 MOUNTING RAILS 40mm

Art.Nr. 9664-PROFINESS 1 / PROFINESS 10



Item

Mounting rail / 40 x 40 mm
Aluminium blank, 10 also in black anodised

Price

on request
~ 921 g/m (PR1)
~ 780 g/m (PR10)

Comments

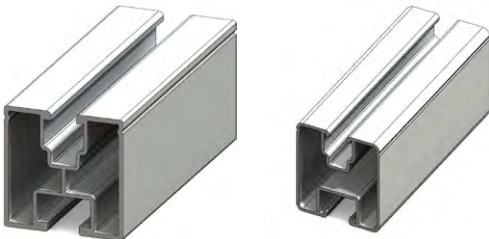
Stocked in various lengths from 1.20 to 6.60 metres long

Span: up to 2.65 metres*

Connection below: DIN 933 M10 (length according to customer requirements) - or Profiness hammerhead screw

Connection at the top: Sliding block M8 or KlickFix system

Art.Nr. 9664-PROFINESS 3 / PROFINESS 30



Item

Mounting rail / 40 x 40 mm
Aluminium blank

Price

on request
~ 774 g/m (PR30)
~ 910 g/m (PR3)

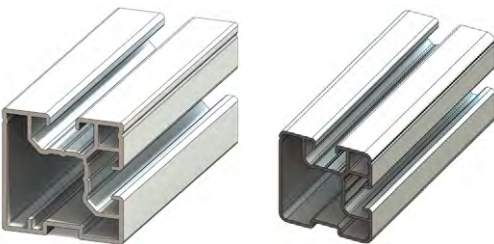
Comments

Span: up to 2.45 metres*

Connection below: DIN 933 M10 (length according to customer requirements) - or Profiness hammerhead screw

Connection at the top: Square nut M8 or hexagon nut M8 or KlickFix system

Art.Nr. 9664-PROFINESS 15 / PROFINESS 150



Item

Mounting rail / 40 x 40 mm
Aluminium blank

Price

on request
~ 804 g/m (PR150)
~ 923 g/m (PR15)

Comments

PR150 stocked in 6.4 metres

Span: up to 2.40 metres*

Lateral connection: slot nut M8

Connection at the top: Sliding block M8 or KlickFix system

Art.Nr. 9664-Profiness 1HB



Item

Mounting rail / 20 x 40 mm
Aluminium blank

Price

on request
~ 536 g/m

Comments

Stocked in 6.6 metres

Span: up to 1.60 metres*

Connection below: DIN 933 M10 (length according to customer requirements)

Connection at the top: Sliding block M8 or KlickFix system

01.2 MOUNTING RAILS 80X40mm

Art.Nr. 9664-PROFINESS 2



Item

Mounting rail / 80 x 40 mm

Price

on request
~ 1253 g/m

Comments

Stored in 6.0 meters

Span: up to 3.75 metres*

Connection below: DIN 933 M10 (length according to customer requirements)

Connection at the top: Sliding block M8 or KlickFix system

Art.Nr. 9664-PROFINESS 16



Item

Mounting rail / 80 x 40 mm

Price

on request
~ 1440 g/m
No stock item, therefore minimum order quantity 1.000 kg

Comments

Span: up to 3.75 metres*

Lateral connection: slot nut M8

Connection at the top: Sliding block M8 or KlickFix system

01.3 MOUNTING RAILS FOR MOUNTING ON TRAPEZOIDAL SHEET METAL

Art.Nr. 9664-PROFINESS 31



Item

Trapezoidal rail / Standard
Also available from stock in short pieces

Price

on request
~ 703 g/m

Comments

Stored in 6.0 meters and various short lengths also glued with EPDM

Profile can be screwed directly onto the trapezoidal sheet metal.

Standard height: 1.3cm

Upper channel for slot nut M8 or KlickFix system

Art.Nr. 9664-Profiness31-25



Artikel

Trapezoidal rail / 2,5cm high
Also available from stock in short pieces

Preis

on request
~ 730 g/m

Anmerkungen

Stored in 6.0 meters and various short lengths

Profile can be screwed directly onto the trapezoidal sheet metal.

Upper channel for slot nut M8 or KlickFix system

Art.Nr. 9664-PROFINESS 31-60



Item	Price
Trapezoidal rail / 6cm high Also available from stock in short pieces	on request ~ 1047 g/m

Comments
Stored in 6.0 meters and various short lengths also glued with EPDM
Profile can be screwed directly onto the trapezoidal sheet metal.
6cm for better rear ventilation of the modules
Upper channel for slot nut M8 or KlickFix system

Art.Nr. 9664-PR31HS / Art.Nr. 9664-PR31HSFlexUT+ 9664-PR31HSFlexHoch



Item	Price
High beading rail / 14mm high With sliding block channel (suitable for sliding block or KlickFix clamp)	on request ~ 425 g/m

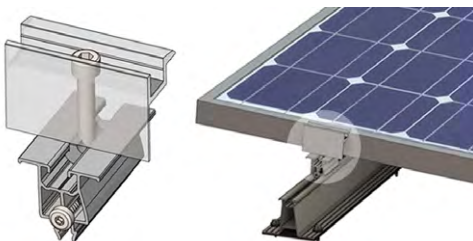
Comments
Stocked in 9 / 12 / 20cm length and 6.1 meters
milled for drilling screw reception in the groove channel and covered with EPDM sealing tape and pre-drilled; 4cm width for screwing in the direction of the bead, so that modules lying crosswise can be clamped on the long side



Artikel	Preis
Trapezoidal rail / 4cm high Available from stock in short pieces	on request

Anmerkungen
Ex stock bottom rail 12cm, incl. EPDM and 2 holes, top part 7cm length, for direct screwing on trapezoidal sheet metal, especially for transverse modules for clamping on the long frame side

Art.Nr. 9664-PR31-WE5-0,06

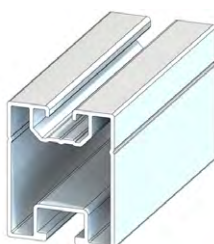


Item	Price
5° angle increase	on request

Comments
Combination of flat and high trapezoidal rail
Can be clicked into the groove channel, tightened with the supplied self-tapping screw
Significantly more favourable generation of an additional angle compared to conventional elevation triangles
For landscape modules / angle 5°

01.4 MOUNTING RAILS 50mm HEIGHT

Art.Nr. 9664-Profiness 5



Item	Price
Mounting rail / 50 x 40 mm	on request ~ 1000 g/m Not longer a stock-profile, so minimum order quantity 1.000 kg

Comments
Span width: up to 3.15 meters*
Connection below: DIN 933 M10 (Length according to customer requirement)
Connection top: Sliding block M8

Art.Nr. 9664-Profiness 6



Item

Mounting rail / 50 x 39 mm

Price

on request
~ 757 g/m

Comments

Length: 6.400 mm

Span width: up to 2.40 meters*

Connection below: DIN 933 M10 (Length according to customer requirement)

Connection top: Sliding block M8

- ★ Design loads:
- Snow load zone 1 in Germany, terrain elevation <285 meters
 - Wind load zone 1, railing category 4, even ground

- Module load: 0.22 kN/m²
- Roof pitch 45 °

Static calculations for other conditions, we will send you on request.

01.5 SLIDING BLOCK

Art.Nr. 9431-120901



Item

Sliding block
Swivel

Price

on request

Comments

for M8 / VE = 100 pieces and 500 pieces / Aluminium / Ball from stainless steel A2

01.6 ACCESSOIRES FROM ALUMINIUM

Art.Nr. 9671-40x40x3 / 9671-40x40x5 / 9671-60x40x3



Item

Angle profile Aluminium
40x40x3mm / 40x40x5mm / 60x40x3mm

Price

on request

Comments

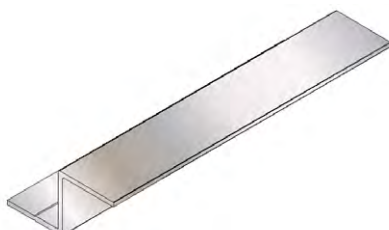
Length: 40x40x3: 4,60 + 4,80 + 5,34 + 6,0 + 6,395 + 7,085 meter

40x40x5: 6.0 meter

60x40x3: 6.0 + 6.34 + 6.64 meter

Other length on request.

Art.Nr. 9671-PROFINESS 20



Item

Z-Profil Aluminium

Price

on request

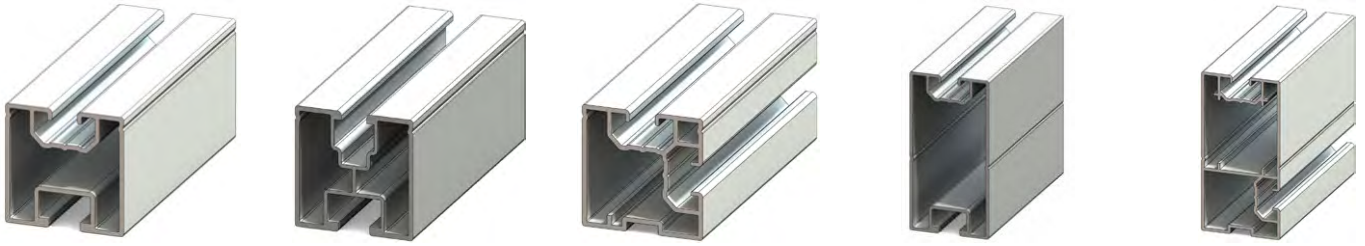
Comments

Length: 6.0 Meter / 40x40x40x3 mm

Other measures, f.e. 40x60x40x3, on request

01.7 MADE-TO-ORDER MOUNTING RAILS

YOUR ITEM NUMBER CAN BE PLACED HERE!



We can supply any profile imaginable.
Even according to your drawing.

Please enquire!
info@profiness.de
Tel. +49 (0) 208 309 61 90
Fax +49 (0) 208 309 61 909



01.8 SIMPLE CROSS BRACING

Art.Nr. 9664-PROFINESS 15 / 9664-PROFINESS 16



Item

Mounting rail for cross connection
for mounting on lower standard rail

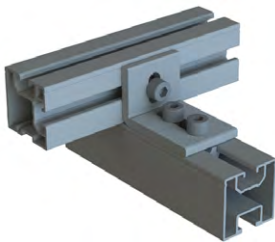
Price

on request

Comments

Connection at the side: Sliding block M8
Connection top: Sliding block M8
For horizontal installation angle with 9701-PROFINESS 14

Art.Nr. 9701-PROFINESS 14



Item

Cross bracing connection angle

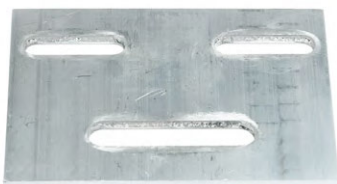
Price

on request

Comments

Assembly of 9664-PROFINESS 15 or PROFINESS 16 on 9664-PROFINESS 1,
PROFINESS 2 or PROFINESS 3 with 3 screws DIN 912-2-8 * 16 and 3 sliding blocks

Art.Nr. 9701-PROFINESS 23



Item

Cross bracing plate

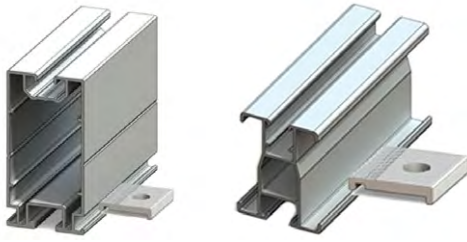
Price

on request

Comments

Mounting profiles with M10 screw connection below, above and below the same profile
can be used

Art.Nr. 9664-PROFINESS 2-26 / 9664-Profiness 6 / 9785-Profiness 26-8



Price

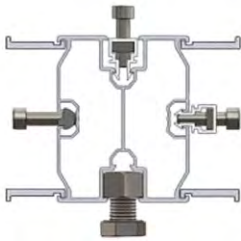
on request

Comments

Installation as upper cross rail with mounting plate 9785-Profiness26-8 and hexagon head screws 8x16

01.9 HEAVY DUTY PROFILE

Art.Nr. 9664-Profiness-200



Item

Heavy duty profile

Price

on request

Comments

Mounting rail ALU 80x100mm

Various connectivity options

Span width up to 5.70 meters depending on local conditions and allowable deflection

02 RAIL CONNECTORS

Art.Nr. 9751-PROFINESS 12



Item

Rail connector / 200mm

Price

on request

Comments

For Mounting rails 9664-PROFINESS 1 / 3 / 15

You also need 4 selfdrilling screws /connectors for fastening

Art.Nr. 9751-PROFINESS 18



Item

Rail connector slide-in / 200mm

Price

on request

Comments

For mounting rails 40x40

Generally 2 connectors / joint are recommended (except for profile 150)

The common connector for the 40x40 profiles

Art.Nr. 9751-Profiness 24



Item

Rail connector insertion / 200mm

Price

on request

Comments

For mounting rails 9664-Profiness 2
The connector can be deformed to prevent slipping or fixed with 6.3x25 self-drilling screws

Art.Nr. 9557-2-200*40



Item

Rail connector 4-hole / 200x40x5mm
Round hole M10 / Stainless steel A2

Price

on request

Comments

Particular for Mounting rail PROFINESS 2 (also for PROFINESS1 and PROFINESS3 used)
You also need 4 x 6-Hexagon head bolt DIN 933 M10 x 20 + flange nuts with serration 6923-2-10

Art.Nr. 9751-PROFINESS 18L



Item

Rail connector slide-in / 200mm Light

Price

on request

Comments

For Light-Mounting rails 9664-Profiness 6
Per connection are external 2 connector inserted

Art.Nr. 9751-Profiness 25



Item

Rail connector slide-in / 150mm Light

Price

on request

Comments

For Mounting rails 20x40 9664-PROFINESS 1HB
You also need 4 selfdrilling screws/connectors for fastening

03 MODULE ASSEMBLY

03.1 MODULE CLAMPS FOR FRAMED MODULES

Art.Nr. 9742-PROFINESS 4-...



Item

End clamp / ALU / and black anodized
(piece anodized and bar anodized available)

Price

on request

Comments

length: 70mm / width: 30mm
Please indicate module height.

Art.Nr. 9745-PROFINESS 13



Item

Middle clamp / ALU / and black anodized
(piece anodized and bar anodized available)

Price

on request

Comments

length: 70mm / width: 36mm / Module distance: 20mm

Art.Nr. 9742-PROFINESS 5-...



Item

End clamp / ALU plus Clip
also available in black anodized
Significantly higher tensile strength than conventional attachments due to special aluminium alloy

Price

on request

Comments

End clamp fully assembled with screw, nut and clip connector
Please specify module height in your order/enquiry!
This convenient clip connection clicks into any top channel of the PROFINESS profiles.
Reduced installation time saves your money!

Art.Nr. 9745-PROFINESS 14-...



Item

Middle clamp / ALU plus Clip
also available in black anodized
Significantly higher tensile strength than conventional attachments due to special aluminium alloy

Price

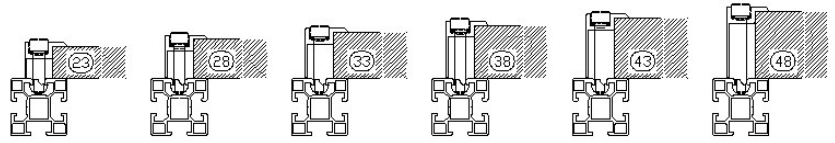
on request

Comments

Centre clamp fully assembled with screw, nut and clip connector
Please specify module height in your order/enquiry!
This convenient clip connection clicks into any top channel of the PROFINESS profiles.
Reduced installation time saves your money!

03.2 SCREWS AND ACCESSOIRES FOR MODULE CLAMPS

ALLEN SCREWS



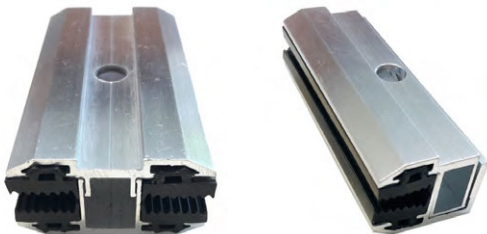
Art.Nr.	Item	Modul height	Screw for rail with Sliding block	Locking washer*
912-2-8*30	M8*30 mm	28 mm	Allen, M8 * 30	
912-2-8*35	M8*35 mm	30 mm	Allen, M8 * 35	x
912-2-8*40	M8*40 mm	32 mm	Allen, M8 * 35	
912-2-8*45	M8*45 mm	34 mm	Allen, M8 * 35	
912-2-8*50	M8*50 mm	35 mm	Allen, M8 * 40	x
912-2-8*55	M8*55 mm	36 mm	Allen, M8 * 40	x
912-2-8*60	M8*55 mm	38 mm	Allen, M8 * 40	
9250-2-8.4	Locking washer A2 8.4 mm	40 mm	Allen, M8 * 45	x
		41 mm	Allen, M8 * 45	x
		42 mm	Allen, M8 * 45	
		45 mm	Allen, M8 * 50	x
		46 mm	Allen, M8 * 50	x
		50 mm	Allen, M8 * 55	x

*For sliding block channel only

Price on request

03.3 MODULE CLAMPS FOR GLASS MODULES

Art.Nr. 9745-Laminat M / 9742-Laminat M



Item	Price
Middle- / End clamp / ALU	on request

Comments

- Separate upper and lower part
 - UV resistant EPDM rubber
 - Modular height adjustable, from 6,5mm glass up
 - FirstSolar approval
- You also require one Allen screw DIN 912 A2 8x35

04 FIXINGS FOR TILED ROOFS

(Roof hooks and accessoires made of stainless steel)

Art.Nr. 9521-Biber



Item

Roof hooks beaver tail / stainless steel

Price

on request

Comments

Hook 30x5 ex stock, others on request
Optionally available from stock: Plain tile replacement aluminium tile

Art.Nr. 9521-Schiefer



Item

Slate roof hooks / stainless steel
Countersunk holes for 6mm countersunk wood screws

Price

on request

Comments

Hook 30x5 ex stock, others on request

Art.Nr. 9521-Schindel



Item

Shingle roof hooks / stainless steel, countersunk holes for 6mm countersunk wood screws

Price

on request

Comments

Hook 30x5mm from stock, also adjustable, other versions on request

Art.Nr. 9521-1-180x80 / 9521-0-150x60



Item

Standard roof hooks for tiled roofs / stainless steel
Available in stainless steel 1.4301 and 1.4016 and mixed Base plate 1.4016 / hook 1.4301

Price

on request

Comments

Variant A plate 180x80x4mm
hook 35x6mm
height 139mm

Variant B plate 150x60x4mm
hook 30x5mm
height 130mm

Art.Nr. 9521-1-180x80K / 9523-1-180x80K / 9522-1-150x60



Item	Price
Roof hooks medium load and heavy load for tiled roofs stainless steel 1.4301 / base plate 1.4016	on request

Comments
Bracket middle load hook 35x6mm Bracket heights 40 / 45mm Bracket heights 35 / 40 / 45mm Roof hook round 30x5mm Bracket heavy duty hook 35x8mm Stirrup heights 40 / 45mm

Art.Nr. 9525-0-140x56 / 9525-1-140x56 T / 9525-1-140x56KL / 9525-4-140x56 / 9525-5-140x56



Item	Price
Roof hook adjustable Available in stainless steel 1.4301 and 1.4016 and 1.4016 mixed plate / hook 1.4301	on request

Comments
Plate 144x56x5mm (from approx. end of 2023 with new hole pattern 144x66x5mm) Hooks 30x5mm, 30x6mm, 35x6mm and 30x8mm assembled Stirrup length 11cm, 13cm and 16cm New: Roof hook adjustable heavy duty

Art.Nr. 9521-Tegalit



Artikel	Preis
Roof hook stainless steel for Tegalit	on request

Anmerkungen
For fixing Profiness system components to tiled roofs with flat concrete roof tiles that meet the requirements of BS EN 490

We recommend our special washer-head screws for fastening the roof hooks onto the rafter. (see heading „Screw accessories“)
We will be happy to send you structural calculations for the roof hooks on request.
To compensate for minor differences in the height of the bracket, we offer 3 and 5mm wooden plates.

05 SOLAR FIXINGS FOR SHEET METAL AND ETERNIT ROOFS

05.1 PRE-ASSEMBLED DOWEL SCREWS FOR TIMBER SUPPORTING STRUCTURES

Art.Nr. 9216-2-...

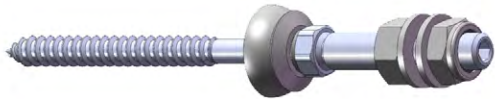


Item	Price
Dowel screws / hexagon head / pre-assembled (similar picture)	on request

Comments
Pre-assembled with 3 serrated nuts WS9345 A2 + EPDM seal WS9218 All dimensions from 10x160 - 12x400 with this pre-assembled item available from stock.

05.2 APPROVED DOWEL SCREWS FOR TIMBER SUPPORTING STRUCTURES

Art.Nr. 9221-2-...



Item

Dowel screws / Allen head / pre-assembled

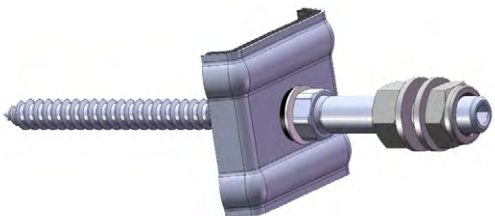
Price

on request

Comments

Dowel screw for timber supporting structure with special coating
Pre-assembled with nuts, washers and mushroom seal
Approval from the construction supervision authority

Art.Nr. 9221-2-...



Item

Dowel screws / Allen head / pre-assembled

Price

on request

Comments

Dowel screw for timber supporting structure with special coating
Pre-assembled with nuts, washers and calotte (cup)
Approval from the construction supervision authority

05.3 APPROVED DOWEL SCREWS FOR STEEL SUPPORTING STRUCTURES

Art.Nr. 9222-2-...



Item

Dowel screws / Allen head / pre-assembled

Price

on request

Comments

Dowel screw for steel supporting structure with special coating
Pre-assembled with nuts, washers and mushroom seal
Approval from the construction supervision authority

Art.Nr. 9222-2-...



Item

Dowel screws / Allen head / pre-assembled

Price

on request

Comments

Dowel screw for steel supporting structure with special coating
Pre-assembled with nuts, washers and calotte (cup)
Approval from the construction supervision authority

05.4 ADAPTOR PLATES FOR DOWEL SCREWS

Art.Nr. 9543-2-82*30*5 / 9544-2-82*30*5



Item

Adapter plate Stainless steel A2 for Dowel screws
M 10 (9543) / M 12 (9544)

Price

on request

Comments

L: 82mm x B: 30mm x H: 5mm / Round hole: 11 / 13mm / Long hole: 11*29,5mm
Material: 1.4301 and temporarily also aluminum (material thickness then 6mm)
For Dowel screw M10/12 and M10 for fixing in the bottom rail channel

Other sizes available Price on request

05.5 ACCESSORIES FOR SHEET METAL AND ETERNIT ROOFS

Art.Nr. 9664-PROFINESS 31 / 9664-PROFINESS 31-60



Item

Profile system for mounting on trapezoidal sheet/
corrugated sheet/sandwich sheet

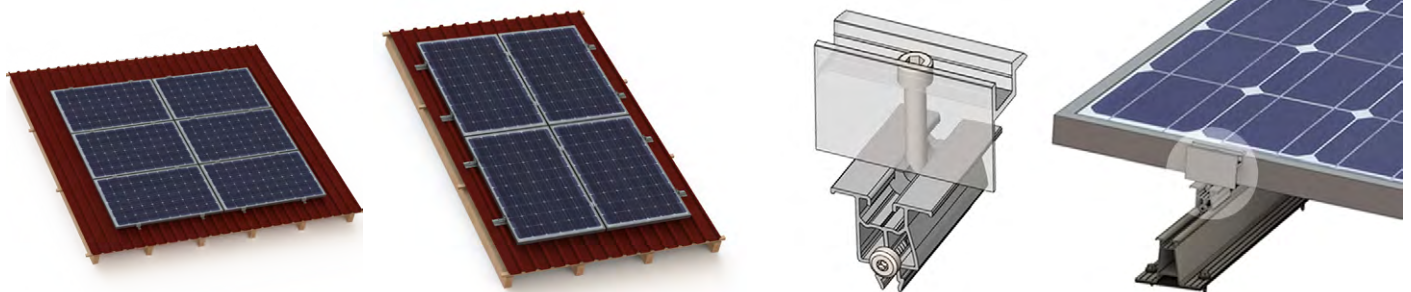
Price

on request

Comments

- Available heights 1.4+2.5+6cm (bead/bridge) and 1.4+4cm (high bead rail)
- T-slot channel or KlickFix clamp
- Trapezoidal bridges bead-to-bead are used to clamp modules lying on edge on the long side or modules lying crosswise on the short side. To clamp transverse modules on the long side, use one of the two versions of the high bead rail
- T-slot channel or KlickFix clamp
- All versions from stock in short pieces of different lengths

Trapezoidal sheet metal direct mounting system for upright or transverse modules and angle increase



05.6 ACCESSORIES FOR SEAMED AND TRAPEZOIDAL SHEET METAL ROOFS

Art.Nr. 9583-Falzklamme



Item

Fold roof clamp

Price

on request

Comments

Fold roof clamp A2 with Long hole for rail connection M10
Assembled with bolt / nut / washer

Art.Nr. 9581-verstellbar



Item

Trapezoidal sheeting panel block A2

Price

on request

Comments

4-hole trapezoidal sheeting panel block for fastening directly to the trapezoidal sheeting adjustable
We recommend mounting with our building authority approved drilling screws 6.3x25
(Item no. 9191-2-6.3x25)

06 ACCESSOIRES FOR FLAT AND SHEET ROOFS

06.1 ELEVATION MADE FROM ALUMINIUM ANGLE PROFILE

Art.Nr. 9785-...



Item

Elevation of angle sections for upright and landscape of the modules

Price

on request

Comments

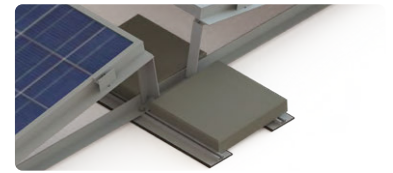
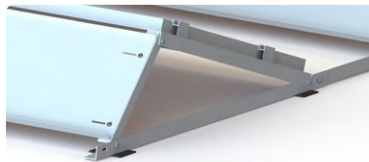
Rigid support triangles made from angle section e.g. 40x40x3 or 40x40x5
Available in any custom angular dimension

06.2 AERODYNAMIC FLAT ROOF SYSTEM

RIDGE SYSTEM

NEW

Ridge system (weighting system parallel to the roof, usually occupying two sides of the roof and connecting via the ridge to prevent slipping)



For our aerodynamic elevation systems (East / West, South and ridge-system) we have designed separate brochures. Please request our Sales:

Please enquire!

info@profiness.de

Tel. +49 (0) 208 309 61 90

Fax +49 (0) 208 309 61 909



07 OPEN LAND INSTALLATIONS

Suitable solutions for every floor requirement

The outdoor systems of Profiness are characterised by a very fast assembly, because we deliver pre-assembled components. The perfectly matched components convince through durability and quality - and this pays off in a high economic efficiency of your system.

Project planning and implementation from one source

We plan, test and accompany the construction of open land photovoltaic plants, solar power plants and solar parks worldwide. Each planning and adaptation of the system is highly individual and must be coordinated on a project-specific basis.

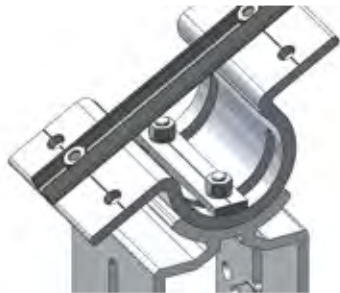
Contact us: We calculate the complete system statics according to your project data, advise you on ground anchoring and prepare a detailed project plan.

Best hold under the most difficult conditions

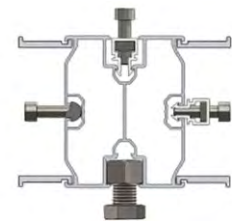
The Profiness heavy duty profile can be used for spans of up to 6 metres. We also offer the right solution for every floor requirement - contact us, we will be happy to advise you.

Added value with intelligent solutions

- very quick assembly
- pre-assembled components
- Durability and quality
- Planning and project management



NEW



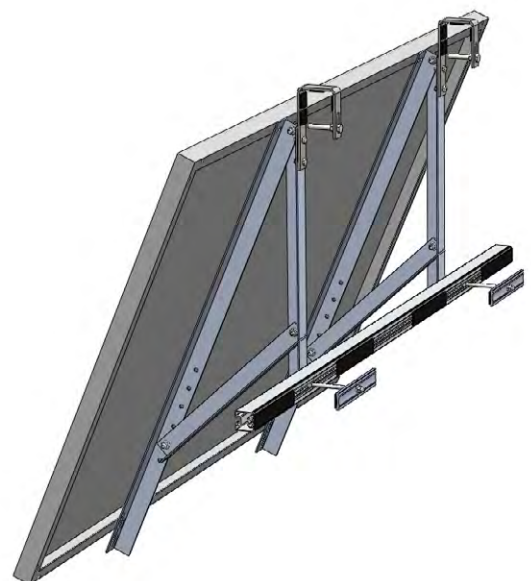
Small tables available from stock

- 20° or 25° inclination
- 2 modules portrait, table length variable

08 RAILING / FENCE / WALL FRAMES

Elevation set for balconies / railings / wall / bar mesh fence

- Variably adjustable for angles of inclination 45° / 55° / 65° / 75° / 90°.
- Set consisting of two triangles, two railing brackets, one fixing rod with two fixing points, incl. all small parts (fence and wall set without fixing bar)
- Module fastening via M6 screw connection directly on the module frame. The module support is pre-drilled with various round and slotted holes, so that a precise fit with most standard modules is ensured.
- The delivery includes two supports to achieve the different angles.



09 SCREW ACCESSORIES, SOLAR

For information: Profiness will not only supply you with our innovative solar items but also all the other rustproof connection elements. With 24.000 items permanently available in stock, PROFINESS is not just a supplier with one of the widest and deepest ranges of products on the market but also a global market leader in rust-proof connection elements – available in grades A1 to A5 and in all strength classes.

Here is a small selection:

Art.Nr. 9810-0-.....*.....



Item

Washer head screws with TX drive
stainless steel hardened
Approved by the construction supervision authority
for fastening roof hooks etc.

Price

on request

Comments

Dimensions 8x40 – 8x400

Art.Nr. 571-2-.....*.....



Item

Hexagon head – wood screws for fastening roof
hooks etc.

Price

on request

Comments

8 x 80	8 x 160	10 x 80	10 x 160
8 x 100	8 x 180	10 x 100	10 x 180
8 x 120	8 x 200	10 x 120	10 x 200
8 x 140		10 x 140	

Additional sizes in stock!! Visit: www.profiness.de

Art.Nr. 912-2-.....*..... / 912-4-.....*.....



Item

Cheese head Allen screw in A2 and A4 according to
DIN912

Price

on request

Comments

for fastening our module clamps etc. see table under 03 Module clamps

Art.Nr. 933-2-.....*..... / 933-4-.....*.....



Item

Hexagon head screw full thread in A2 and A4
according to DIN933

Price

on request

Comments

including size M10x25 for bottom rail channel Item 9664-PROFINESS 1

Art.Nr. 9664-2-10x25



Item

Hammerhead screw A2 for Profiness mounting rail

Price

on request

Comments

For the lower M10 channel

Art.Nr. 9021-2-..... / 9021-4-.....



Item

Washer with large external diameter in A2 and A4 according to DIN9021

Price

on request

Comments

for:	inside (mm)	out (mm)
M8	8,4	24,0
M10	10,5	30,0
M12	13,0	37,0

Additional sizes in stock!! Visit: www.profiness.de

Art.Nr. 125-2-..... / 125-4-.....



Item

Washer in A2 and A4 according to DIN125

Price

on request

Comments

for:	inside (mm)	out (mm)
M8	8,4	16,0
M10	10,5	20,0
M12	13,0	24,0

Additional sizes in stock!! Visit: www.profiness.de

Art.Nr. 9250-2-....



Item

Locking washers "S"
for our module clamps etc. see table under
03 Module clamps

Price

on request

Comments

for:	inside (mm)	out (mm)
M8	8,4	13,0
M10	10,5	16,0
M12	13,0	18,0

Additional sizes in stock!! Visit: www.profiness.de

Art.Nr. 603-2-.....*..... / 603-4-.....*.....



Item

Mushroom head square neck bolt in A2 and A4 according to DIN603

Price

on request

Comments

M10 x 20 / M10 x 25
Additional sizes in stock!! Visit: www.profiness.de

Art.Nr. 557-2-..... / 557-4-.....



Item

Square nut in A2 and A4 according to DIN557

Price

on request

Comments

M8 / M10 / M12
Additional sizes in stock!! Visit: www.profiness.de

Art.Nr. 934-2-..... / 934-4-.....



Item

Hexagon nut in A2 and A4 according to DIN934

Price

on request

Comments

M8 / M10 / M12
Additional sizes in stock!! Visit: www.profiness.de

Art.Nr. 985-2-..... / 985-4-.....



Item

Stop nut thin in A2 and A4 according to DIN985

Price

on request

Comments

M8 / M10 / M12
Additional sizes in stock!! Visit: www.profiness.de

Art.Nr. 6923-2-..... / 6923-4-.....



Item

Hexagon nut similar to DIN 6923 with flange and serration in A2 and A4

Price

on request

Comments

M8 / M10 / M12
Additional sizes in stock!! Visit: www.profiness.de

Art.Nr. 9664-ErdungM8HKS



Item

UNI earthing terminal NIRO
for Rd 8-10 mm and conductor 4-50 mm²

Price

on request

Comments

with hammerhead bolt M8 and nut for threading

Art.Nr. 9495-ZN...



Item

Star inserts for TX drive

Price

on request

Comments

Material: Zinc diecast
For TX sizes 10-40

Art.Nr. 5401-2-40-6,25



Item

Ball for driving in

Price

on request

Comments

Balls Niro 304 6.25 mm Grade40
For securing Allen screws SW6

Art.Nr. KabelclipM10



Item

Cable clip

Price

on request

Comments

For M10 slotted channel, click-in, incl. cable ties

Art.Nr. KabelclipM8



Item

Cable clip

Price

on request

Comments

For M8 slotted channel, click-in, incl. cable ties

Art.Nr. KabelclipKante36



Item

edge clip

Price

on request

Comments

For fastening at the edge of a profile, clamping thickness 3-6mm (e.g. in flat roof areas for fastening to 3mm angle profile) / Incl. cable ties

Art.Nr. KabelclipKante073



Item

edge clip

Price

on request

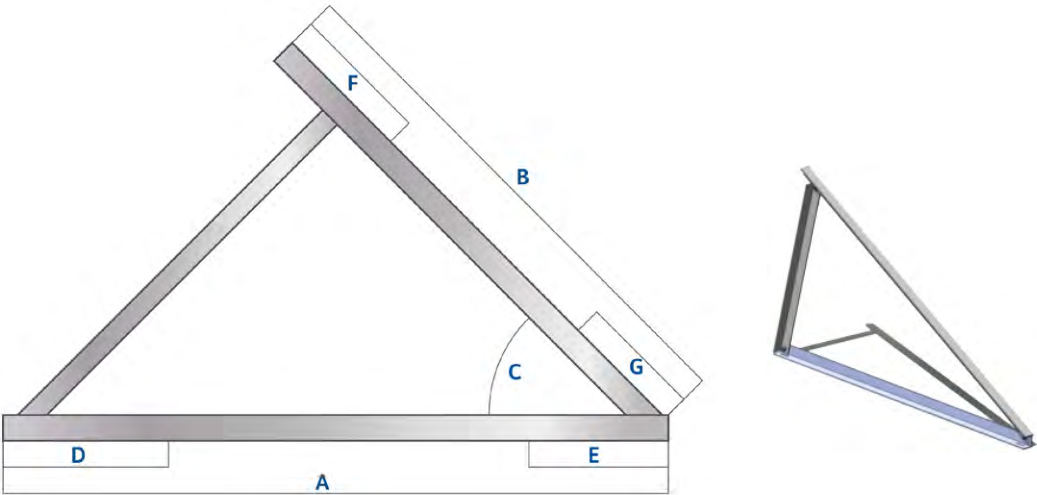
Comments

For fixing to the edge of a profile, clamping thickness 0.7-3mm (e.g. for fixing to the back of the module frame) / Incl. cable ties

10 CHECKLIST ELEVATION STANDS

customer address	
name	<input type="text"/>
street	<input type="text"/>
city	<input type="text"/>
phone	<input type="text"/>

project location (if different location)	
name	<input type="text"/>
street	<input type="text"/>
city	<input type="text"/>
phone	<input type="text"/>

Maße	
	<p>A (mm) <input type="text"/></p> <p>B (mm) <input type="text"/></p> <p>C (degree) <input type="text"/></p> <p>D (mm) <input type="text"/></p> <p>E (mm) <input type="text"/></p> <p>F (mm) <input type="text"/></p> <p>G (mm) <input type="text"/></p>

additional drill holes	
on the bottom wing, pos. D & E type and inner diameter <input type="text"/>	additional comments <input type="text"/>
on the upper/module wing, pos. F & G type and inner diameter <input type="text"/>	additional comments <input type="text"/>

additional information	
material <input type="text"/>	quantity <input type="text"/>
additional comments <input type="text"/>	

11 CHECKLIST FOR AERODYNAMIC SYSTEMS

(flat roof & slightly pitched roofs)

customer address		project location (if different location)	
name	<input type="text"/>	name	<input type="text"/>
street	<input type="text"/>	street	<input type="text"/>
city	<input type="text"/>	city	<input type="text"/>
phone	<input type="text"/>	phone	<input type="text"/>

building/location data			
roof pitch degree	<input type="text"/>	roof pitch in direction	<input type="text"/>
building height	<input type="text"/>	length building edge east m	<input type="text"/>
length building edge north m	<input type="text"/>	terrain height m	<input type="text"/>
wind load kN/m ²	<input type="text"/>	snow load kN/m ²	<input type="text"/>

* Mandatory information for enquiries outside Germany

solar panel data					
quantity	<input type="text"/>	length mm	<input type="text"/>	width mm	<input type="text"/>
height mm	<input type="text"/>	weight kg	<input type="text"/>	<input type="text"/>	<input type="text"/>

roof information			
roof surface	<input type="text"/>	load reserve kg/m ²	<input type="text"/>
is there an attic/parapet?	<input type="text"/>	height of attic/parapet cm	<input type="text"/>
Is there an insulation?	<input type="text"/>	type	<input type="text"/>
thickness mm	<input type="text"/>	additional comments:	
<input type="text"/>			

mounting system		
mounting system <input type="text"/>		
<p>flat roof aerodynamic system - south 10° or 15°</p> 	<p>flat roof aerodynamic system – east/west 10°</p> 	<p>slightly tilted roofs roof-parallel ballast system</p> 

We will choose the fitting variation of our mounting system according to your panel dimensions and available space on the roof. The dimensions of the mounting systems will be apparent in your individual offer.

Please sketch the planned array design or send us a layout plan!

13 CHECKLIST FOR TRAPEZOIDAL METAL SHEET ROOFS

customer address	
name	<input type="text"/>
street	<input type="text"/>
city	<input type="text"/>
phone	<input type="text"/>

project location (if different location)	
name	<input type="text"/>
street	<input type="text"/>
city	<input type="text"/>
phone	<input type="text"/>

building/location data					
roof pitch degree	<input type="text"/>	roof pitch in direction	<input type="text"/>	height of roof m	<input type="text"/>
verge length m	<input type="text"/>	building length m	<input type="text"/>	terrain height m	<input type="text"/>
wind load kN/m ²	<input type="text"/>	snow load kN/m ²	<input type="text"/>	<small>* Mandatory information for enquiries outside Germany</small>	roof type

solar panel data			
quantity	<input type="text"/>	panel orientation	<input type="text"/>
length mm	<input type="text"/>	width mm	<input type="text"/>
		height mm	<input type="text"/>
		weight kg	<input type="text"/>

trapezoidal metal sheet			
material	<input type="text"/>	additional comments:	<input type="text"/>
thickness mm	<input type="text"/>		
distance between the beads mm	<input type="text"/>	width of upper bead mm	<input type="text"/>
		screw	<input type="text"/>

sketch
<p>Please sketch the planned array layout in the following grid or send us an layout plan!</p> <div style="border: 1px solid #ccc; height: 250px; width: 100%;"></div>

15 CONTACT

Michael Schreiber

Managing Director

Tel.: +49 (0)208 - 30 96 19 - 00
Mail: m.schreiber@profiness.de

Ulrich Kamp

Sales

Tel.: +49 (0)208 - 30 96 19 - 01
Mail: u.kamp@profiness.de

Sabine Plott

Sales

Tel.: +49 (0)208 - 30 96 19 - 05
Mail: s.plott@profiness.de

Thomas Drewitz

Sales

Tel.: +49 (0)208 - 30 96 19 - 02
Mail: t.drewitz@profiness.de

Mats Michel

Sales

Tel.: +49 (0)208 - 30 96 19 - 08
Mail: m.michel@profiness.de

Jan Matten

Sales

Tel.: +49 (0)208 - 30 96 19 - 03
Mail: j.matten@profiness.de

Björn ter Schüren

Sales

Tel.: +49 (0)208 - 30 96 19 - 04
Mail: b.terschueren@profiness.de

Christian Mönninger

Purchasing Department

Tel.: +49 (0)208 - 30 96 19 - 06
Mail: c.moenninger@profiness.de

Alexander Stroncik

Logistics

Tel.: +49 (0)208 - 30 96 19 - 09
Mail: a.stroncik@profiness.de



PROFINESS GmbH

Broicher Waldweg 42 info@profiness.de (24h) Tel.: +49 (0)208 - 30 96 19 - 00
45478 Mülheim a.d. Ruhr www.profiness.de Fax: +49 (0)208 - 30 96 19 - 09

NEW

PROFINESS PLANNING SOFTWARE

After a short introduction, the Profiness planning software enables you to plan various roof types with our substructure. Regional conditions, individual characteristics of the property and various possibilities of the substructure are combined into a coherent and statically verifiable project including parts list and documentation. All this is done in a graphically supported and intuitively understandable way.

Contact us if you are interested in using our software.

